



A Wikov Company

A detailed, semi-transparent blue rendering of a complex rail drive assembly, showing various gears, shafts, and housing components. The assembly is positioned in the upper half of the page, behind the main text.

Gmeinder Getriebe World of Rail Drives

www.gmeinder.com

EN

110 years Transmission expertise



Dr. Wolfgang Fischer, Managing Director

When it comes to final drives and spare parts for rail-bound vehicles, Gmeinder is the reliable expert with decades of experience, comprehensive expertise and an outstanding range of services.

As a full-service provider, we can offer you everything from a single source: from development and design to production, maintenance and servicing. In addition, training sessions and expert opinions are also part of our versatile service portfolio.



110 years
experience



100+
employees



65.000+
drives supplied



35+ years
life cycle



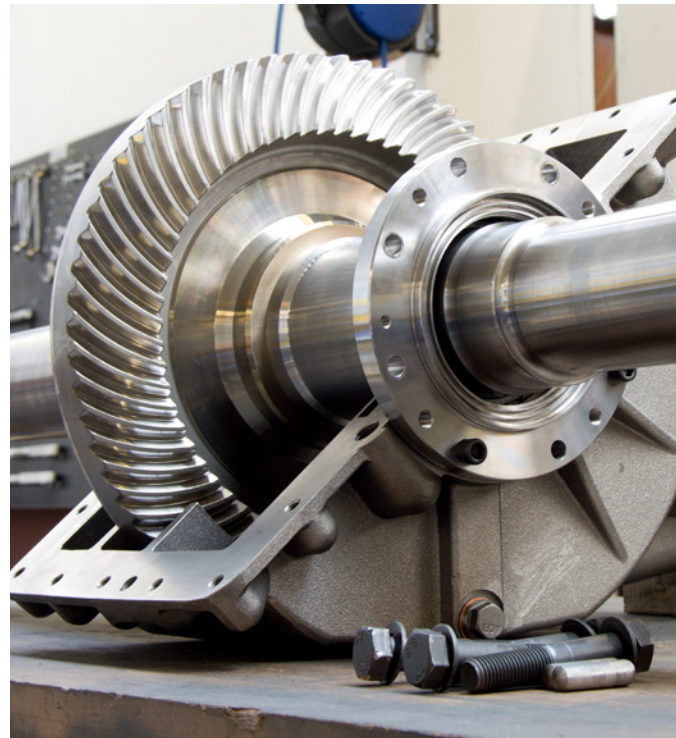
Our traditional and yet innovative company was founded in 1913 and employs over 100 experienced and committed staff. In the course of our corporate history, we have played a key role in the development of modern rail vehicles thanks to numerous innovations. Since 2019, Gmeinder Getriebetechnik has been part of the Wikov Industry group of companies – an established European gearbox manufacturer – resulting in numerous synergy effects and benefits for our customers.

At our company headquarters in Mosbach, Baden-Württemberg, we have state-of-the-art production facilities and advanced testing equipment. In addition, we rely on our modern service centre and in-house workshop to ensure a high level of customer focus. Coupled with our in-depth expertise, we offer gearboxes that are characterised by maximum precision, durability, efficiency and reliability.

A large number of well-known clients on all five continents place their trust in our expertise and performance. We offer a global sales and service network that ensures the best possible performance and customer proximity.



Find out more about the Wikov Group.



Powerful technology for first-class results

Our experienced production teams use the latest machinery that ensures high-precision and economical production processes. Our production technologies include:

- Bevel gear teeth (cyclo-palloid method)
- CNC cylindrical grinding
- CNC turning-milling centre
- Conventional turning
- CNC machining centre
- Conventional boring mill

We also have a band saw, a sandblasting and washing system and two air-conditioned measuring rooms with comprehensive measuring and testing equipment – including two 3D premium measuring devices with active damping (X/Y/Z axis): 1500/300/1200 mm).



Professional assembly



Our comprehensive range of services includes the assembly of gearboxes for rail vehicles. For our customers, we manage:

- ➔ Initial assembly of all types of final drives
- ➔ Disassembly, diagnostics and overhaul/reassembly of service gearboxes
- ➔ Conversion and improvement of existing final drives, including those from third-party manufacturers



Umfassende Zertifizierungen:

- ➔ DIN 27201-7
- ➔ DIN EN 15085-2 CL4
- ➔ DIN EN ISO 9001-2015
- ➔ DIN EN ISO 14001-2015
- ➔ ECM Implementing Regulation (EU) 2019/779
- ➔ DB – Q1 supplier

Gearboxes and drives



We have been continuously active in the rail vehicle market since 1913 and are responsible for the development, production and worldwide delivery of high-quality transmissions and drives.

This includes all types of helical and bevel gearboxes, including gearboxes with gear shift and built-in condition monitoring systems (GGT-GearSaver® – see p. 12/13).

Whether for high-speed trains, mainline locomotives, shunting locomotives, railcars, metros, trams or special-purpose vehicles – we combine our specialist knowledge with maximum precision to manufacture the right product for all requirements!

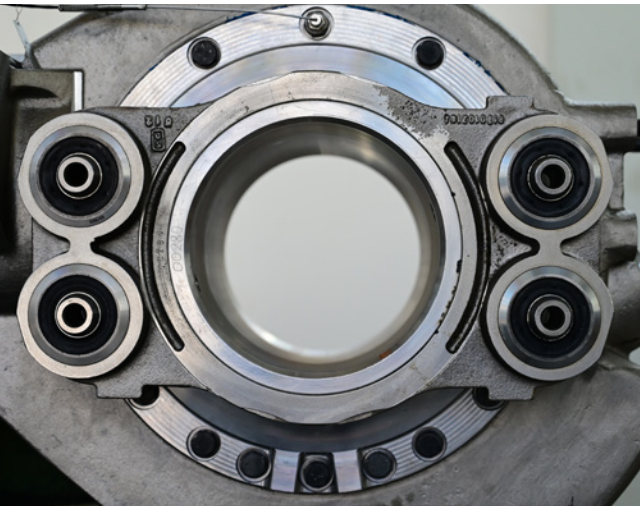
HANS BUCH

IC3



STAY ON TRACK WITH
CUSTOM SOLUTIONS &
QUALITY SPARE PARTS





Our gearboxes – an overview

Gearboxes for maintenance vehicles

- Helical gearbox
- Helical gearbox with switching device to disengage the drive
- Helical gearbox with shifting device for very slow working speeds, track travel and towing

Gearboxes for diesel railcars

- Helical bevel gearbox
- Helical bevel gearbox with reversing mechanism

Gearboxes for electric railcars

- Partially sprung helical gearbox with hollow shaft
- Fully sprung helical gearbox with hollow shaft
- Single-stage helical gearbox

Gearboxes for locomotives

- Helical gearbox
- Helical „Tatzlager“ gearbox
- Helical bevel gearbox
- Helical bevel gearbox for narrow gauge

Gearboxes for low-floor trams

- Bevel gearbox
- Fully sprung bevel gearboxes
- Helical gearbox



www.renz.pl



Watch Animations and Videos here

Gmeinder and Wikov Service Partner for Poland

We offer Maintenance and Overhaul of

- ▶ Power Packs from MTU
- ▶ All Kind of Axle Gearboxes for DMU and EMU
- ▶ LRV Gearboxes
- ▶ Automotive Gearboxes, Axles and Suspensions
- ▶ E-Motors for Trucks and Busses

PETER RENZ Sp. z o.o.

ul. Armii Krajowej 43
PL 05-600 Grojec

☎ +48 48 665 06 00

🖨 +48 48 665 06 02

✉ serwis.grojec@renz.pl

GGT-GearSaver® – reliable gearbox monitoring



The Gearbox Condition Monitoring System GGT-GearSaver® is a product developed by Gmeinder for the automatic monitoring of final drives.

By using this innovative solution, unnecessary costs – e.g. due to bearing or gearing damage and the associated downtimes – can be efficiently and reliably avoided.

The GGT-GearSaver® measures the oil quality, oil level, temperature and humidity and detects any metal particles. This comprehensively certified complete system features a robust design, can be integrated into existing communication systems and, in addition to the sensor unit and the gateway, also includes complex analysis software. This means that the gearbox status can be continuously monitored from any location.

RailTrade

Rail Trade s.r.o
Rouchovany 434, CZ-675 57
E-mail: info@rail-trade.cz
Web: www.rail-trade.cz

Servicevertretung der Firma Gmeinder für die Tschechische und Slowakische Republik



Warum uns wählen?



Individueller Ansatz



Qualitätsteile



Professioneller Standard



The advantages of the GGT-GearSaver®:

- ➔ Time-saving monitoring
- ➔ environmentally friendly
- ➔ Early warning of problem conditions
- ➔ Extended service life
- ➔ Reduced operating costs
- ➔ Less unplanned downtime
- ➔ Avoid expensive damage
- ➔ Precise maintenance planning
- ➔ Extension of service intervals
- ➔ Effective and reliable



HAMMERWERK
baumann

**WIR GRATULIEREN
GGT ZUM 110.**

www.hammerwerk-baumann-kg.de

**SCHMIEDETECHNIK
SEIT 1711**





WIKOV

Mechanische Getriebe und Antriebe

- Getriebe für Schienenfahrzeuge
- Industriegetriebe
- Turbogetriebe

Seit 1918





Wir
gratulieren
herzlichst zum
110. Jubiläum

We pioneer motion

Dank Cromadur: 30 % mehr Traglast, doppelte Lebensdauer

Sie wollen haltbare, kompakte und nachhaltige Lösungen für den Schienenverkehr entwickeln? Ob Antrieb, Getriebe oder Radsatzlager – mit unseren Lagern geben wir Ihnen das Werkzeug an die Hand, um innovative und nachhaltige Designs auf die Schiene zu bringen. Unser Werkstoff Cromadur erhöht die Tragfähigkeit von Wälzlagern um bis zu 30 Prozent und verdoppelt die Lebensdauer. Die Vorteile: Erhöhung der Leistungsdichte, deutlich reduzierte Wartungs- und Stillstandszeiten und erhebliches Potenzial für Downsizing beim Design.

Sie sind interessiert? Sprechen Sie uns gerne direkt an:
rail_transport@schaeffler.com



SCHAEFFLER



DER SPEZIALIST FÜR INNOVATIVE ANTRIEBSLÖSUNGEN



KWD Kupplungswerk Dresden GmbH hat im Schienenfahrzeugbau in den letzten Jahren eine hervorzuhebende Position erworben. Mit konstruktiv und fertigungstechnisch anspruchsvollen Produkten haben wir für unterschiedlichst angetriebene Drehgestelle moderne Antriebslösungen mitentwickelt, welche sich auf allen Kontinenten bewähren. Die Verbindung einer eigenen Entwicklung und Konstruktion, mit der Fertigung unter einem Dach, gewährleistet eine hohe Produktqualität, die weltweit anerkannt ist.

BAHNTECHNIK

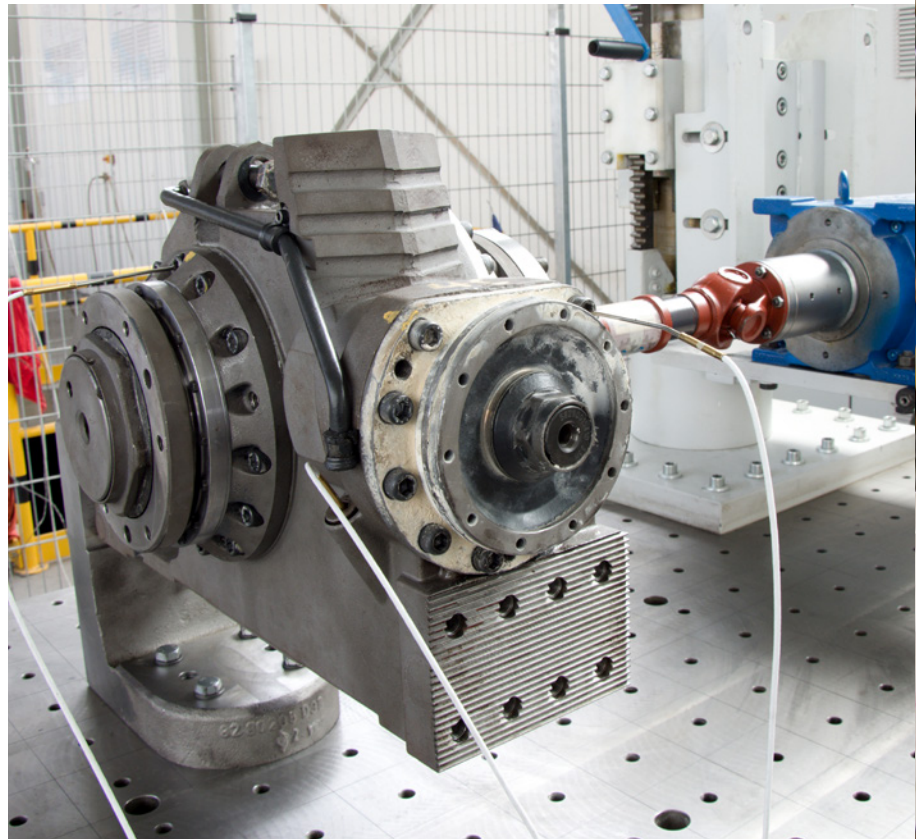
- Hochgeschwindigkeitszüge
- Metros, S- und U-Bahnen
- Straßenbahnen
- Elektrotriebwagen EMU
- Spurwechselantriebe
- Bergbahnen
- Monorail
- Einschienen- und Schwebbahnen
- Lokomotiven

INDUSTRIE

- Allgemeiner Maschinen- und Anlagenbau
- Energieerzeugung
- Förder- und Gewinnungstechnik
- Kompressoren- und Verdichtertechnik
- Kraftwerkstechnik
- Landtechnik
- Schiffstechnik
- Seilbahntechnik
- Stahl- und Walzwerkstechnik
- Winden- und Hebeteknik

REFERENZEN





The Gmeinder Service Centre

More than 30 service employees are on hand at Gmeinder to fulfil all customer requests quickly and efficiently. Our modern, well-equipped service centre with its own workshop offers optimum conditions for the professional execution of all work. This primarily includes the inspection, processing/modification and repair of wheelset bearings, wheels, brake discs, wheelset shafts, gearboxes or even complete wheelsets. Maintenance work can also be carried out by our qualified personnel on the customer's premises



„Wandlung ist notwendig
wie die Erneuerung
der Blätter im Frühling.“
(Vincent van Gogh)

Aerosolabscheider, Laserlohnbeschriftung, Konstruktion
Schnelle und zuverlässige CNC-Fertigung von Bauteilen

DER WEG ZU UNS

Straus GmbH
Martin Weinert Maschinenbau GmbH

Am Eisweiher 10
74821 Mosbach

Tel. +49 62 61 | 1807 422
info@straus-gmbh.de

www.straus-gmbh.de
www.mweinert.de

As an experienced multi-brand service provider, we work on all types of construction, regardless of manufacturer, using well thought-out and well-organised processes. Within this framework, we offer a wide range of specialist services to meet all customer requirements.

Inspections, analyses and investigations

Our service specialists scrutinise the complete wheelset in accordance with strict technical specifications. A meticulous inspection of all components, from the wheelset bearing to the gearing parts, is sometimes possible without dismantling the gearbox thanks to state-of-the-art technology. Depending on the scope of the inspection, you do not necessarily need to send your gearbox to us – a gearbox inspection at your premises is also possible.

General inspection (HU)

The legally prescribed regular inspection of the complete wheelsets ensures that they are in perfect condition and retain their value. In addition, the main inspection prevents major damage in the medium and long term, which can avoid high costs for unplanned gearbox repairs and vehicle downtime, for example.



Together with Gmeinder in the U.K since 1985

BUTTKEREIT

ADVANCED MACHINE COMPONENTS

M. Buttkerit Ltd
Unit 2, Britannia Rd Ind Est
Sale, Cheshire M33 2AA
United Kingdom

Tel. ++44 (0)161 969 5418
Email. info@buttkereit.co.uk

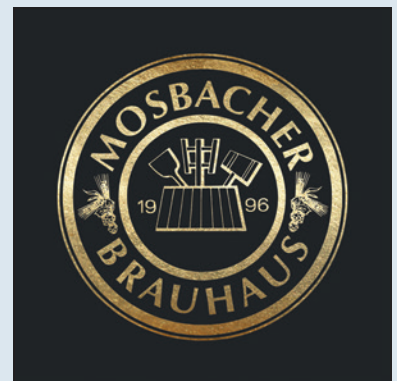
www.buttkerit-rail.co.uk

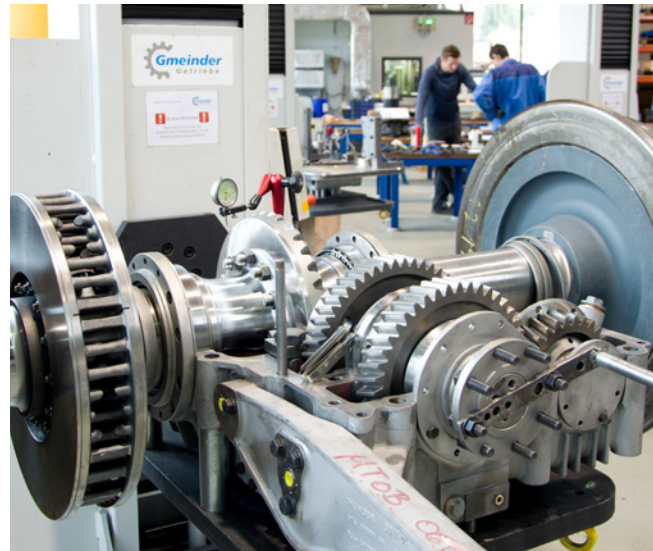
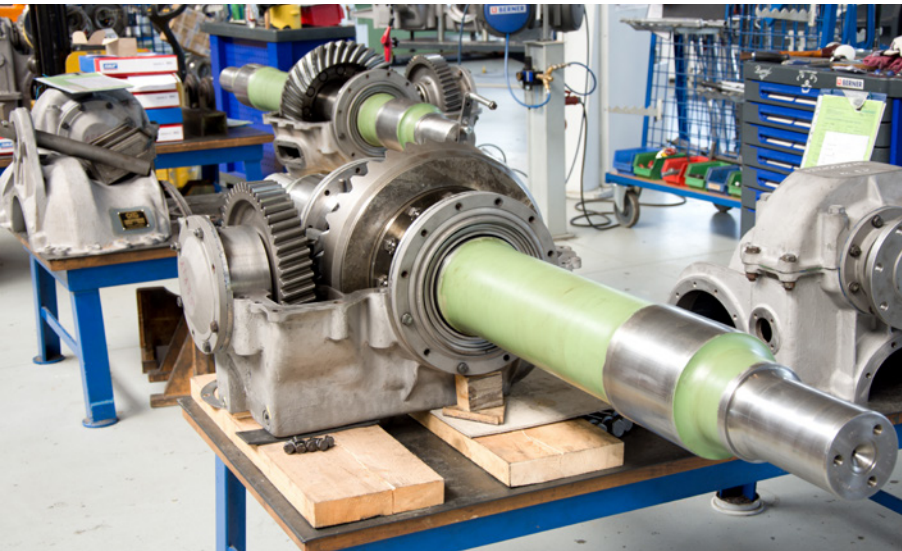
Our all-inclusive package



As specialists in the servicing of complete wheelsets, we offer you a comprehensive service package which includes professional repairs for all wheelset components.

In addition to disassembling and cleaning the wheelset bearings, wheels (solid wheels and wheels with tyres), brake discs, wheelset shafts and final drives, all components are checked using the latest testing technologies, adjusted as if necessary and then reassembled ready for use. Of course, detailed documentation of all work performed is also part of our all-inclusive package.





Modification and adaptation

In addition to technical improvements, e.g. for leaking labyrinth seals or changes to the gearing system, there are a variety of reasons for modifying or customising your gearbox. These include, for example, changes to route conditions or train operations (change of gear ratio) or a need for increased availability. We work with you to develop a customised and cost-effective concept and adapt your gearbox to the given requirements.

Our service extras for you

Non-destructive testing: Especially for safety-relevant components such as torque arms and wheelset shafts; magnetic particle testing; ultrasonic testing; concentricity testing.

Further education and training: Training in the areas of maintenance, assembly/disassembly and individually arranged training courses.



PASCH Y CÍA S.A.U.

Calle Poeta Joan Maragall 9,
1ª planta, 28020 Madrid

www.pasch.es

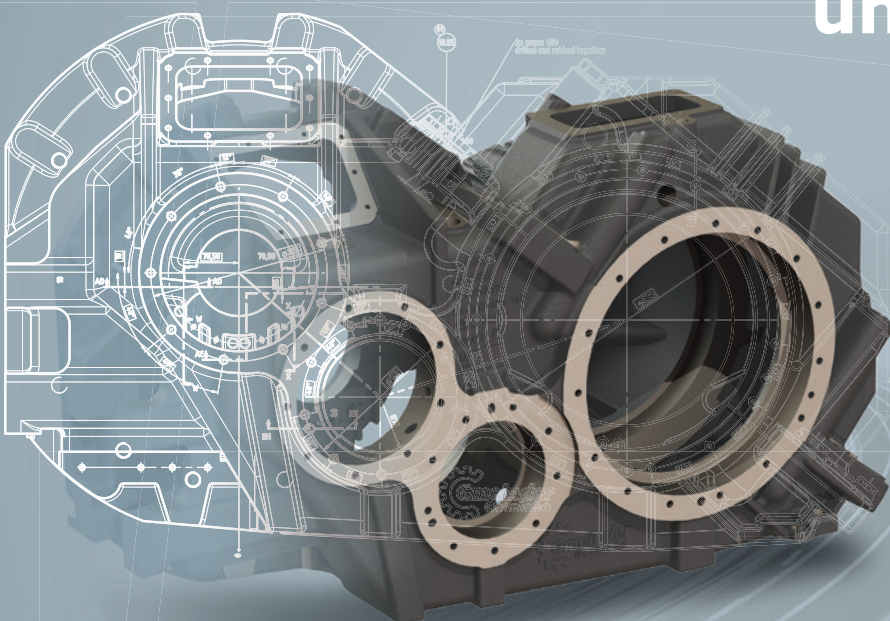


Spare parts – fast and reliable

We have a well-stocked spare parts warehouse containing gearbox components from numerous manufacturers for the rapid procurement of spare parts. We offer specialist expertise in the production of new high-quality and durable individual parts. Do you need parts for gearboxes over 60 years old? Gmeinder can help you!



Wir setzen gute
Ideen in eine sichere
und nachhaltige
Zukunft um.



Kovis ist ein international innovatives Unternehmen, das sich mit der Entwicklung und Produktion hochwertiger Produkte für die Bahnindustrie und andere Industriebranchen beschäftigt.





At Gmeinder Getriebe, we have an excellent body of staff that is characterised by a strong team dynamic. We attach great importance to ensuring that we enjoy our work at all times. Our employees are proud to give their best every day, and this pride is reflected in their dedication to the job at hand.

The importance of our work becomes visible through our daily commitment. Because we trust our employees, we give them decision-making freedom that ensures a varied workload and personal growth. These values create the foundation for a fulfilling work environment.

Working at Gmeinder

NORTHERN EUROPE'S LEADING RAILWAY CORPORATION

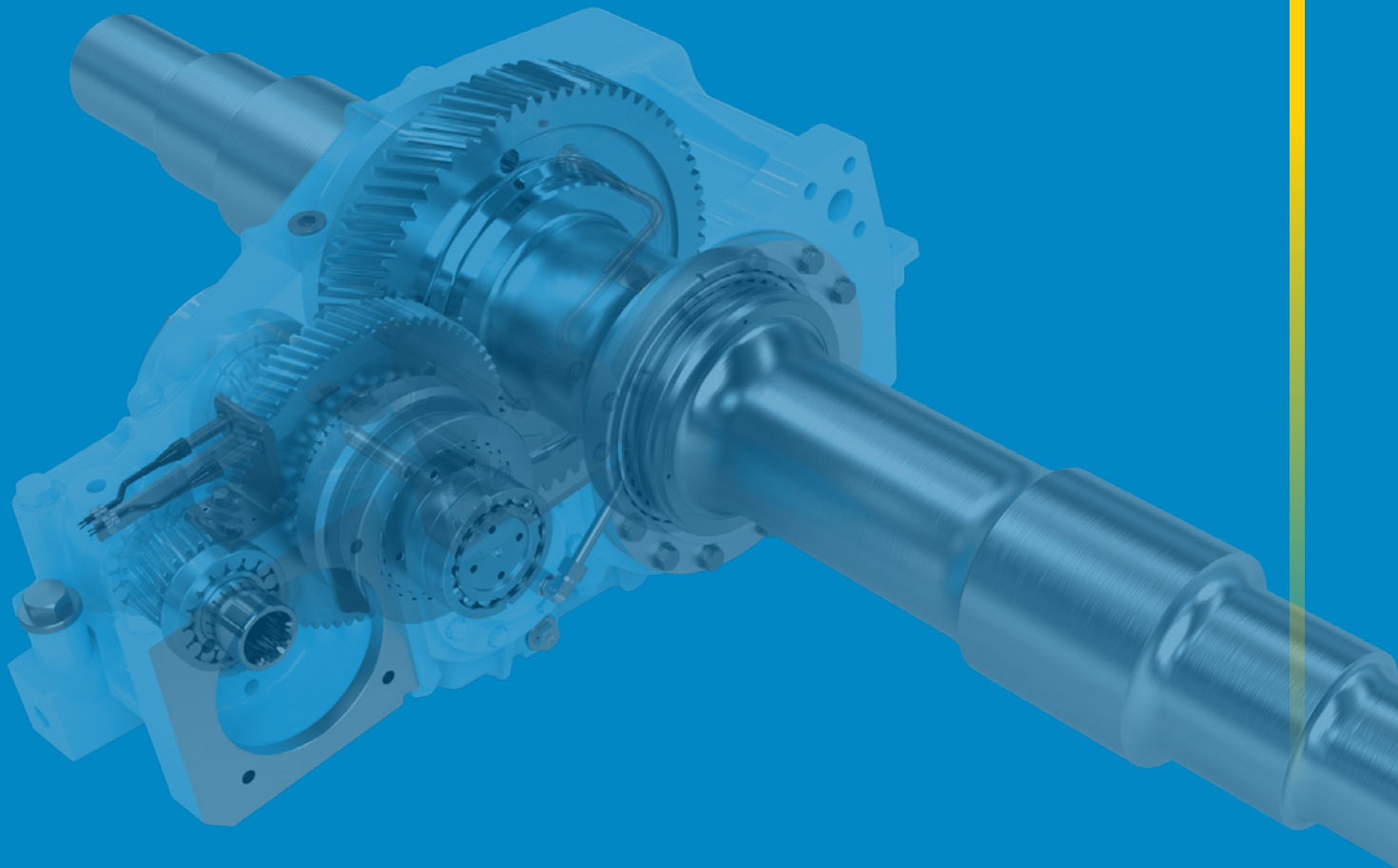
OFFERING SERVICE AND SUPPORT TO THE RAILWAY INDUSTRY

- Sales support
- Life cycle costs (LCC)
- On- and Offsite Services
- Spareparts

O.J. Dahl AS · Kværnerveien 1 · N-0192 Oslo
 norway@dahlrail.com · www.dahlrail.com



117 Jahre



GGT GMEINDER GETRIEBETECHNIK GmbH
Anton-Gmeinder-Str. 9-19
74821 Mosbach

T: +49 6261 806-0
F: +49 6261 806-160
M: info@gmeinder.de



Discover Gmeinder
online.